

[www.ibnmajid.gov.iq](http://www.ibnmajid.gov.iq)

Our people make the difference in the success of your project. At IMCO, we live our core values and you'll see them in everything we do. Those values-- safety, integrity, quality, stewardship, positive relationships and community service-- are a natural fit with what's important to you.



COMPANY  
PROFILE

# IMCO

**IBN MAJID STATE COMPANY**



Address : Basra - Iraq

E-mail: [investment@ibnmajid.gov.iq](mailto:investment@ibnmajid.gov.iq) - [info@ibnmajid.gov.iq](mailto:info@ibnmajid.gov.iq)  
[www.ibnmajid.gov.iq](http://www.ibnmajid.gov.iq)



“WHEN OUR VALUES AND  
YOUR GOALS ALIGN, WE  
BUILD MORE THAN A PROJECT  
WE BUILD A PARTNERSHIP.”



## CONTENTS

04 GENERAL MANAGER MESSAGE

05 COMPANY HISTORY

06 ABOUT COMPANY

08 VALUES & MISSION

10 OUR TEAM

12 COMPANY FACILITIES

12 AL SALAM FACTORY

14 AL NASSER FACTORY

16 AL WAFAA FACTORY

18 HEAT EXCHANGER FACTORY

20 OUR PROJECTS



Address : Basra - Iraq  
E-mail: [investment@ibnmajid.gov.iq](mailto:investment@ibnmajid.gov.iq) - [info@ibnmajid.gov.iq](mailto:info@ibnmajid.gov.iq)  
[www.ibnmajid.gov.iq](http://www.ibnmajid.gov.iq)

# GENERAL MANAGER MESSAGE



Ibn Majid General Company is a company specialized in the manufacture of heavy engineering equipment to meet the requirements of the oil sector companies in addition to both the electricity sector and the industrial sector, with its specialization in the manufacture of marine vessels

And river sections and iron dams specialize in the manufacture of structures, bridges and iron sections.

The company has all the human capabilities and technical expertise necessary to carry out on-site construction and rehabilitation of oil projects, electric power stations, iron bridges and iron platforms for oil export.

Mohammed Al Hijaj  
GENERAL MANAGER

“ Our people make the difference in the success of your project. At IMCO , we live our core values and you'll see them in everything we do. Those values-- safety, integrity, quality, stewardship, positive relationships and community service-- are a natural fit with what's important to you. ”

## COMPANY HISTORY

Ibn Majid State Company was established in 1990

It was built by Iraqi companies and equipped for two years with machinery and equipment imported from outside Iraq

The expansions and additions of the company are:

- Establishment of a factory for the manufacture of heat exchangers.
- Maintenance and repair of machinery and equipment for entities, including rolling factories and cranes.
- The design and production capacity of the company was (5000) tons of iron per year, which increased to (7000) tons per year
- The company stopped for the period (2004-2003) due to the military operations that took place on 2013/20/3 and the looting that accompanied them.

# ABOUT COMPANY



A state-owned company and one of the leading companies in the construction and engineering sector. Our company is equipped with advanced equipment and a strong infrastructure to provide optimal support and enhance the opportunities for industrialists to strengthen their capabilities and achieve success.

Ibn Majid Company is a prominent company in the southern region of Iraq, specializing in the manufacturing and installation of heavy engineering equipment. We cater specifically to the needs of electricity sector companies, oil companies, and the industrial sector in southern Iraq..

## PRODUCTION CAPACITY.

- Design production capacity: 11,000 tons
- Available capacity: 9000 tons
- The products of Ibn Majid Company are important products and there is an increasing demand for the company's products and services according to the current working conditions, future conditions and economic development in the country
- The company aims to reach the maximum capacity of 11,000 tons and more.

## INSTALLATION AND POSSIBILITY OF THE COMPANY

Ibn Majid General Company for Heavy Engineering Equipment is the only company with experience in southern Iraq specialized in manufacturing all types of heavy engineering industries using all kinds of welding, cutting and rolling and for all types of sheets of carbon steel, stainless steel, iron alloys, aluminum and brass to meet the needs of both companies in the oil sectors Industry and electricity, in addition to marine industries, dams and iron bridges.

- The company has all the human capabilities and experience necessary to complete the on-site construction and rehabilitation of oil, industrial and electrical projects, as well as the construction of iron bridges and oil export platforms.
- The company is a specialized and consulting center in all welding works. The company has a welding school that organizes courses and gives reliable certificates to other sectors.
- Establishing a shipyard for the purpose of establishing and maintaining marine and river vessels.

# VALUES & MISSION



## OUR OBJECTIVE

Our mission is to offer our customers the finest quality and best selection of products with the quickest service in the fields of our specialty. We believe good service is worrying about the details so our customers don't have to. with its inception, IMCO has intended to develop a long-standing reputation of offering the best services. Furthermore, we hire and train outstanding people at our Company. This allows us to focus on treating customers as long-term partners, exceeding their expectations, and delivering every order with a speed and accuracy unparalleled in the industry.

We are very proud to be associated with a number of leading manufacturers and the top-quality products they offer.

## VALUES

- As it aims to be a regional leader and one of the Iraq consultancy firms, IMCO pledges to lead by example, maintaining and reinforcing a world class ethical practice and an unwavering culture of excellence.
- We pride ourselves in our reputation and a scrupulous regard for high standards of personal conduct and integrity. IMCO is built upon the principles of fair dealings and ethical conduct and we adhere to careful observation of all applicable laws and regulations.
- Ethical conduct is fundamental to how we do business and reinforces our core values which shapes our culture and defines the character of the company. Ethics also guide how we behave and make decisions at all levels of the company: From the officers, directors, employees, representatives and agents of IMCO .
- "Consistent with our core value of integrity, IMCO acts in all things with honor and the highest standards of ethical, law-abiding and professional behavior and operates with a zero-tolerance towards bribery or any other form of corrupt practice." Chief Executive Officer

Commitment to safety

Positive relationships

Integrity

Community involvement

## VISION

At IMCO our vision is to be the company of choice for engineering, constructing and maintaining the energy and industrial infrastructure that people rely on around Iraq.

## MISSION

Working to build a better future, improve quality of life, and create long-term value for our people, business partners, shareholders and communities.

# OUR TEAM



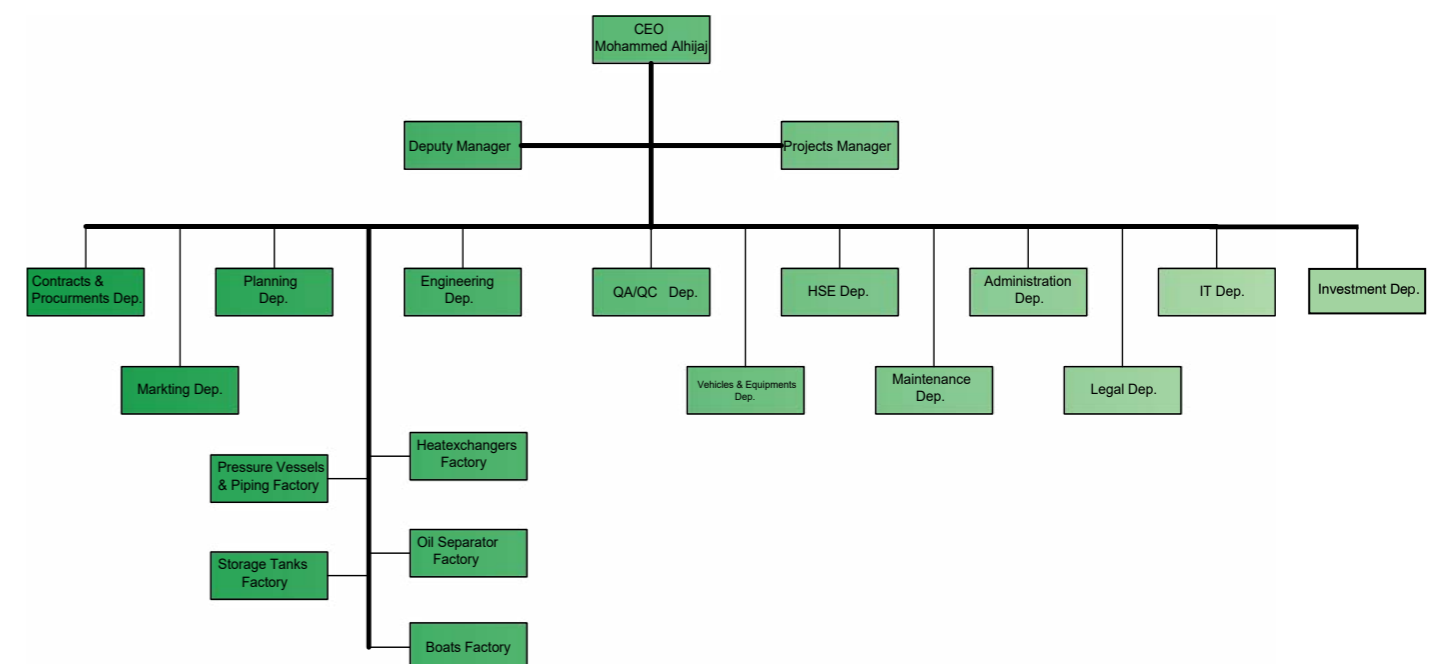
Our company consists of a group of engineering cadres under the headship of a consultant engineer, along with the executive engineers specialized in the fields of mechanical, electrical and civil engineering, and those who have the adequate experience to implement all kind of engineering projects, led by a chief engineer. Comprises a number of sections (planning, engineering designs, project management and implementation).

Management, partners and employees of IMCO has a working environment that is very dynamic and enriching where the people come first. This environment helps develop both professional and personal qualities for all.

“ IMCO owns a group of engineers and technicians those with high technical experience The company worked on the training and development through local training and scholarship outside the country to obtain the necessary expertise for modern machinery and specialized equipment which the company sought to owning that allows the company to assume the responsibilities and tasks to carry out company's activities

”

Organization Chart



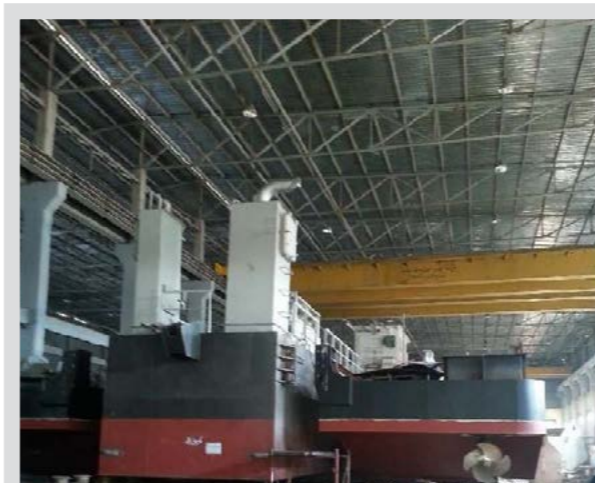
# COMPANY FACILITIES



IMCO consists of four main factories in addition to retaining its sections, namely: -

## 1- AL SALAM FACTORY

This plant specializes in the manufacture of naval vessels and steel structures for bridges weighing more than 10 tons. naval vessels, steel structure for bridges that more than 10 tons weight



# COMPANY FACILITIES



## 2- AL NASSER FACTORY

This plant specializes in the manufacture of different types of storage vessels and other kinds of steel structure up to 10 tons weight

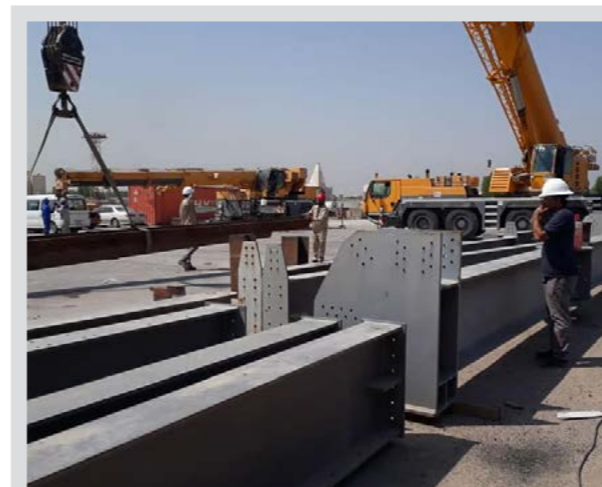


# COMPANY FACILITIES



## 3- AL WAFAA FACTORY

This plant specializes in the manufacture of different types of storage vessels and other kinds of steel structure up to 5 tons weight



# COMPANY FACILITIES



## 4- HEAT EXCHANGER FACTORY

Design, manufacture and repair of heat exchangers for all types and sizes and capacities, manufacturing convex endings



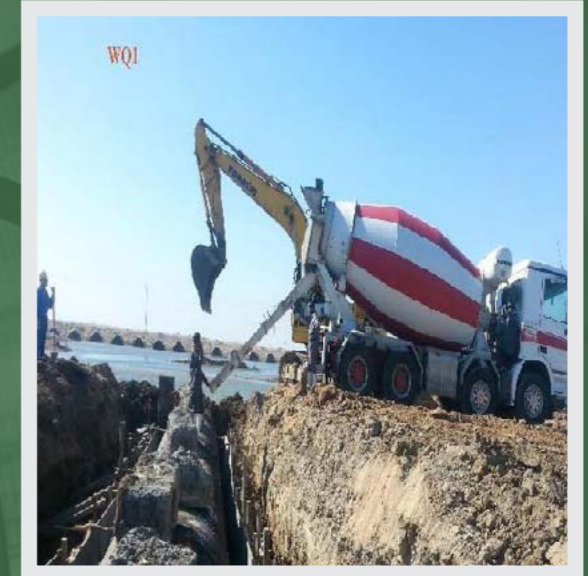
# OUR PROJECTS



## 1- WEST QURNA/1 WORKS

A -Supply plain concrete for base of steel pipe culverts using sulphate resistant cement with compressive strength of no less than 21 MPa with mix ratio of (924 1:1:5:3M3

The steel pipe culverts available in North Romaila. IMCO collected this material, transport and connect the parts of plates to be cylinder and to be of 22 meter length or more on each cylinder.



B-Supply local soil without compaction to cover the pipes on the 103 Row on the west and east side 2 meters deep and 3 meters width in approximate 60000 M3



C-Supply local soil with compaction under supervision of supervising engineer – each 25 cm layer of row 79000 103-102-101 M3



# OUR PROJECTS

Civil works for the establishment of the foundations of the tanks in the Maysan Oil Company



Civil works to covering by reinforcement cement the Shatt al-Swaib crossing in the Majnoon field



## 2- AL-FAO STORAGE TANKS

Our company has contracted with the Basra Oil Company to set up and installation eight (8) Floating Roof storage tanks (58,000 m<sup>3</sup> each) and pipe system with booster pumps for FAO Depot, Basra – IRAQ And this project have a lot of civil works such as.

### 1- THE ESTABLISHMENT OF ROADS



### 2-THE FOUNDATIONS OF TANK BY MODERN WAY TO STRENGTHEN THE FOUNDATION BY DEEP MIXING CEMENT INJECTION



# OUR PROJECTS

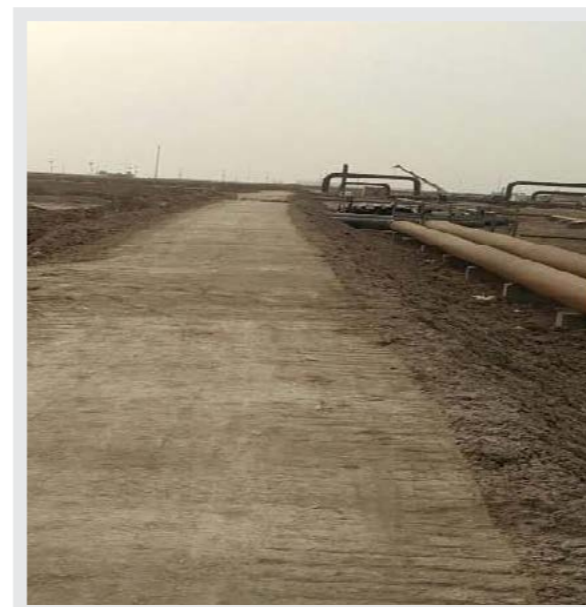
## 3-BUILDING CONTROL STATION FOR EIGHT TANKS



## 5-CREATE DYKE AROUND EACH TANK 3M HEIGHT AND 5.5 M WIDTH COMPACTED



## 4-WORKS POURED AND INSTALLATION OF CONCRETE SUPPORTING FOR PIPELINES



# OUR PROJECTS

## 3- ELECTRICAL PROJECT



## 4- GAS & OIL SECTOR



# OUR PROJECTS

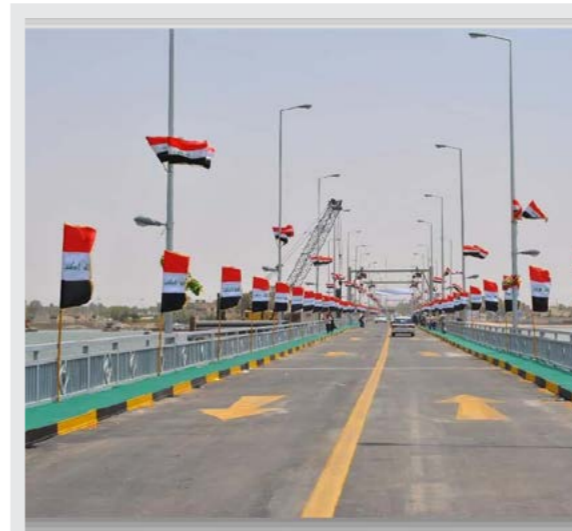
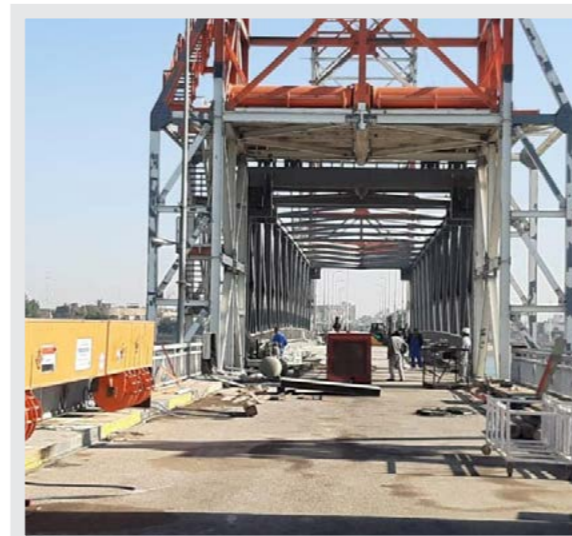
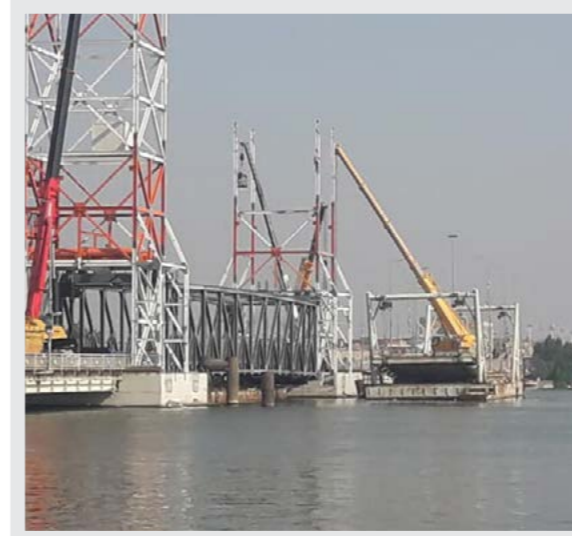


# OUR PROJECTS

## 5- AL-TANOMA BRIDGE

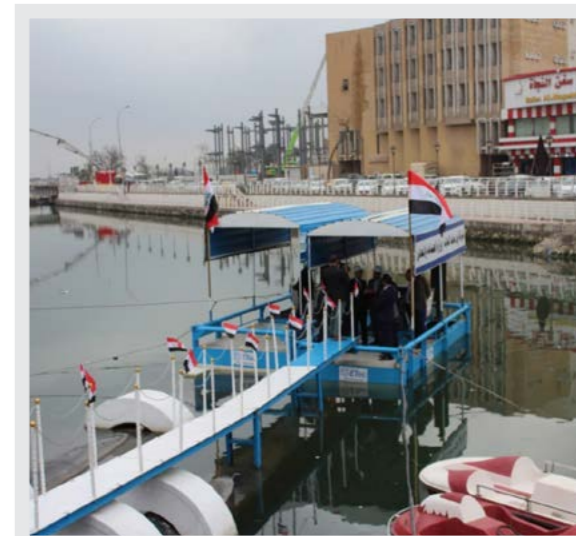
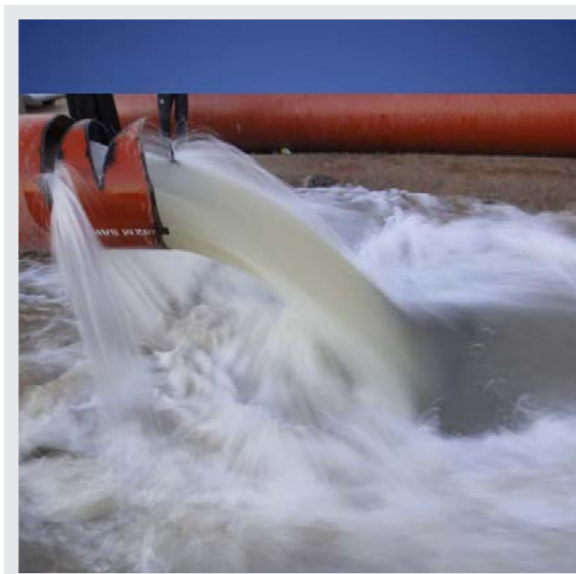
ONE OF THE MOST IMPORTANT BRIDGES IN BASRA GOVERNORATE CENTER IS CHARACTERIZED BY THE FOLLOWING SPECIFICATIONS:

- LENGTH: 440 METERS
- WIDTH: 9.6 METERS
- NAVIGATIONAL APERTURE: 60 METERS
- TOWER HEIGHT: 45 METERS
- NUMBER OF PILLARS: 80



# OUR PROJECTS

## 6- SUPPLY, INSTALLATION AND OPERATION OF FLOATING PUMPS



# HSE PLAN



Safety and responsibility of each individual in his work site and linked to his relationship with around him such as people, machines, tools, materials, and methods of operating, and others. Safety is a package of measures aimed at preventing accidents and work injuries, which is of no less importance for the production, quality and costs related to it the Integrated Safety and Environmental Management:

1. Define scope: What do I want to do?
  2. Analyze hazards: What are the risks of doing it?
  3. Develop controls: How can I control those risks?
  4. Perform work: Do it (controlling for risks)
  5. Evaluate Performance: How can I do better next time?
- And our company have Safety procedures guide attached

Our Company quality objectives are to complete projects in accordance with the agreed programme, specification and cost, to the highest standards of quality and efficiency whilst ensuring that statutory and regulatory requirements are complied with and client expectations are met.

Our Company is fully committed to the Quality Management System and its continued improvement, and has assigned responsibility in this regard to the Managing Personnel, whose duties include ensuring that Management Review meetings are held at regular intervals to review the system's executive operation and development. IMCO Company's Quality Management System conforms to the requirements of ISO. It is subject to regular examination and assessment by an independent certification authority, which ensures a process of constant evaluation and improvement. Our Company also conforms to Environment Management System (ISO) and Health & Safety Management System (OHSAS). This benefits our Clients and how we conduct our business, while enhancing the standing of Our Company in the construction industry.



# IMCO



Address : Basra - Iraq  
E-mail: [investment@ibnmajid.gov.iq](mailto:investment@ibnmajid.gov.iq) - [info@ibnmajid.gov.iq](mailto:info@ibnmajid.gov.iq)  
[www.ibnmajid.gov.iq](http://www.ibnmajid.gov.iq)